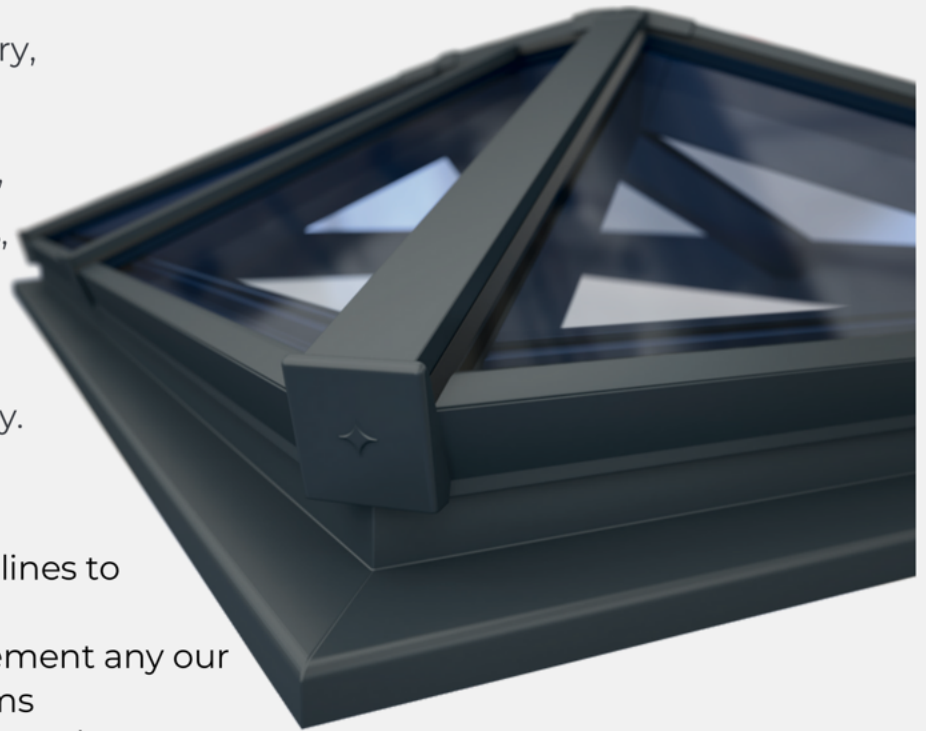




## Roof Lanterns

Roof lantern system is a contemporary, high quality and thermally-efficient orangery roof system. Featuring slim, thermally-broken aluminium profiles, the system has been designed to be fast and straightforward to install, while delivering high levels of security.



- Elegant design, featuring slim site lines to maximise glass area
- May be colour-matched to complement any our aluminium door or window systems
- Fabrication and installation are fast and straightforward
- High levels of security are assured through innovative design and construction
- Excellent thermal performance and energy efficiency

## Roof Lantern

Our Roof Lantern system has been developed to deliver all the performance and aesthetic benefits of a modern aluminium solution. Its clean, slim lines provide a strong, durable, secure and low-maintenance solution for orangery roofs. Available in any finish from Smart's extensive colour palettes,

Our orangery roof system may be specified in any colour to perfectly match or to contrast with the building's doors and windows. With options ranging from traditional white to pastel shades of blue and green, to bronze and silver and through to vibrant red. It can also be supplied in a dual-colour format, with the inside and outside of the frame specified in different colours.

The elegant design of the system ensures that the glass area is maximised, creating a light and airy feel in the orangery, with a minimalist structure to ensure virtually uninterrupted views

Providing a traditional 25° pitch, the elegant name roof system has been designed to incorporate standard 28mm double glazed units, with the thermally-broken aluminium profiles combining to deliver outstanding energy efficiency and thermal performance.

Suitable for both contemporary and traditional designs, new build homes, extensions and refurbishments. Our roof lantern is fast and straightforward to install. With minimal equipment required and the incorporation of bespoke moulding blocks, only straight cuts are required for each profile.

Security of the finished system is assured through the use of pressure plates which are secured with anti-tamper screws, ensuring that the roof is strong, safe and secure.

